



**THOR RETAIL ADVISORS**  
AS EXCLUSIVE AGENT  
FOR PREMIER EQUITIES PRESENTS

# 1122

MADISON AVENUE  
BETWEEN 83RD & 84TH STREETS



Proposed Division

**MATTHEW SEIGEL**

Executive Vice President

917.522.8605

[mseigel@thorretailadvisors.com](mailto:mseigel@thorretailadvisors.com)

**SKYE TAYLOR**

Director

917.522.8603

[staylor@thorretailadvisors.com](mailto:staylor@thorretailadvisors.com)

# 1122

MADISON AVENUE  
BETWEEN 83RD & 84TH STREETS



Frontage: 35' on Madison Avenue

Possession: Immediate

Neighbors: Theory, Velvet, Lululemon, Madewell,  
James Perse, Alexis Bittar, Maje, Aesop, Joseph,  
Le Pain Quotidien, Sweaty Betty,  
Pinko (coming soon)

Single Building Identity with Double Height Exposure  
Opportunity to Build Additional Floors  
Logical Divisions Considered  
300 SF Rear Outdoor Space



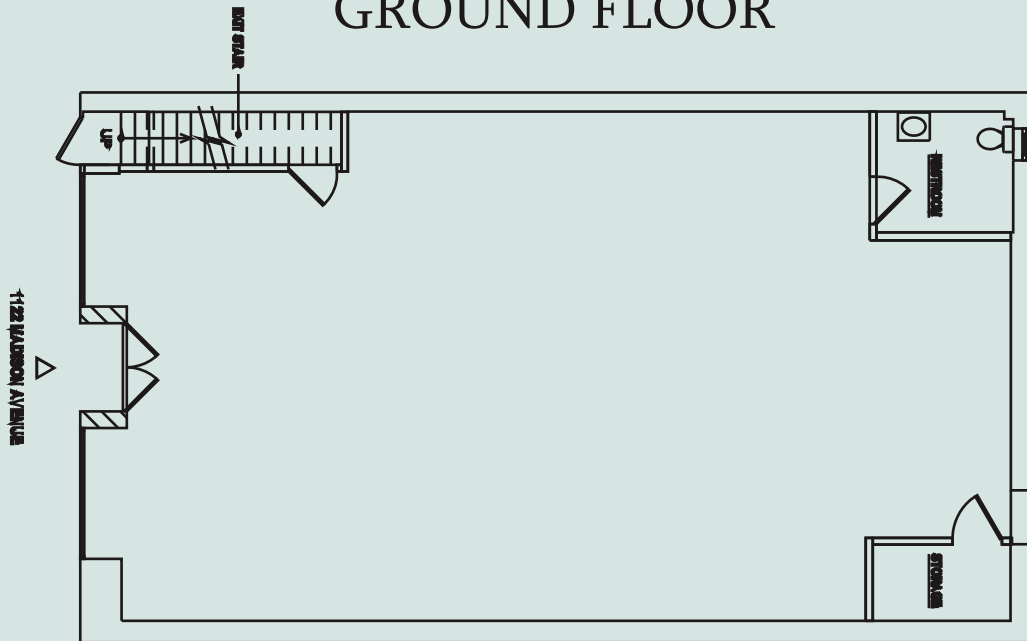
**THOR RETAIL**  
ADVISORS

2,250 SF Ground Floor  
2,250 SF Second Floor  

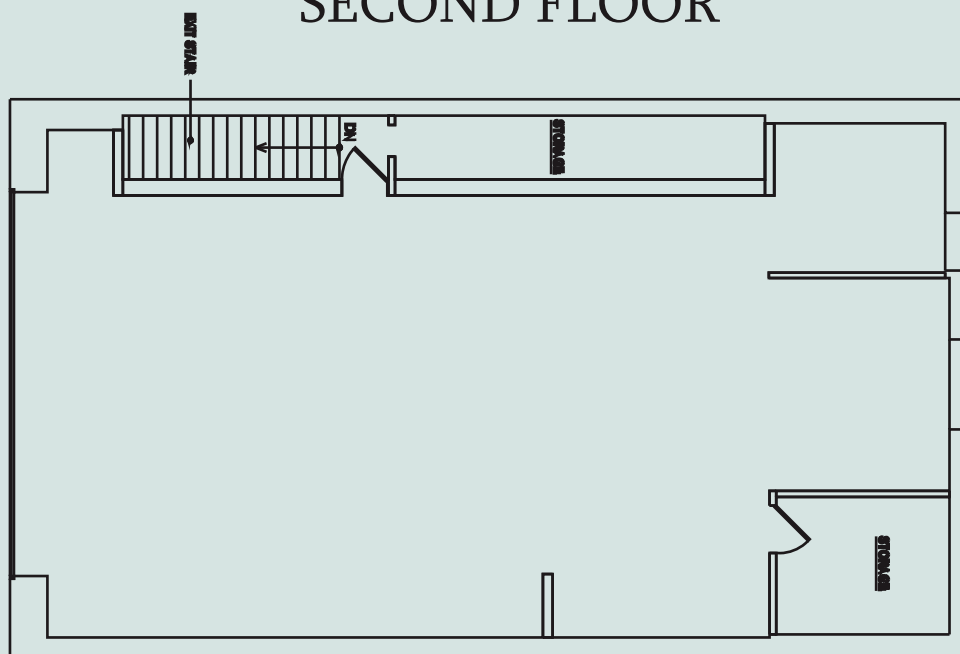
---

4,500 SF Total

## GROUND FLOOR



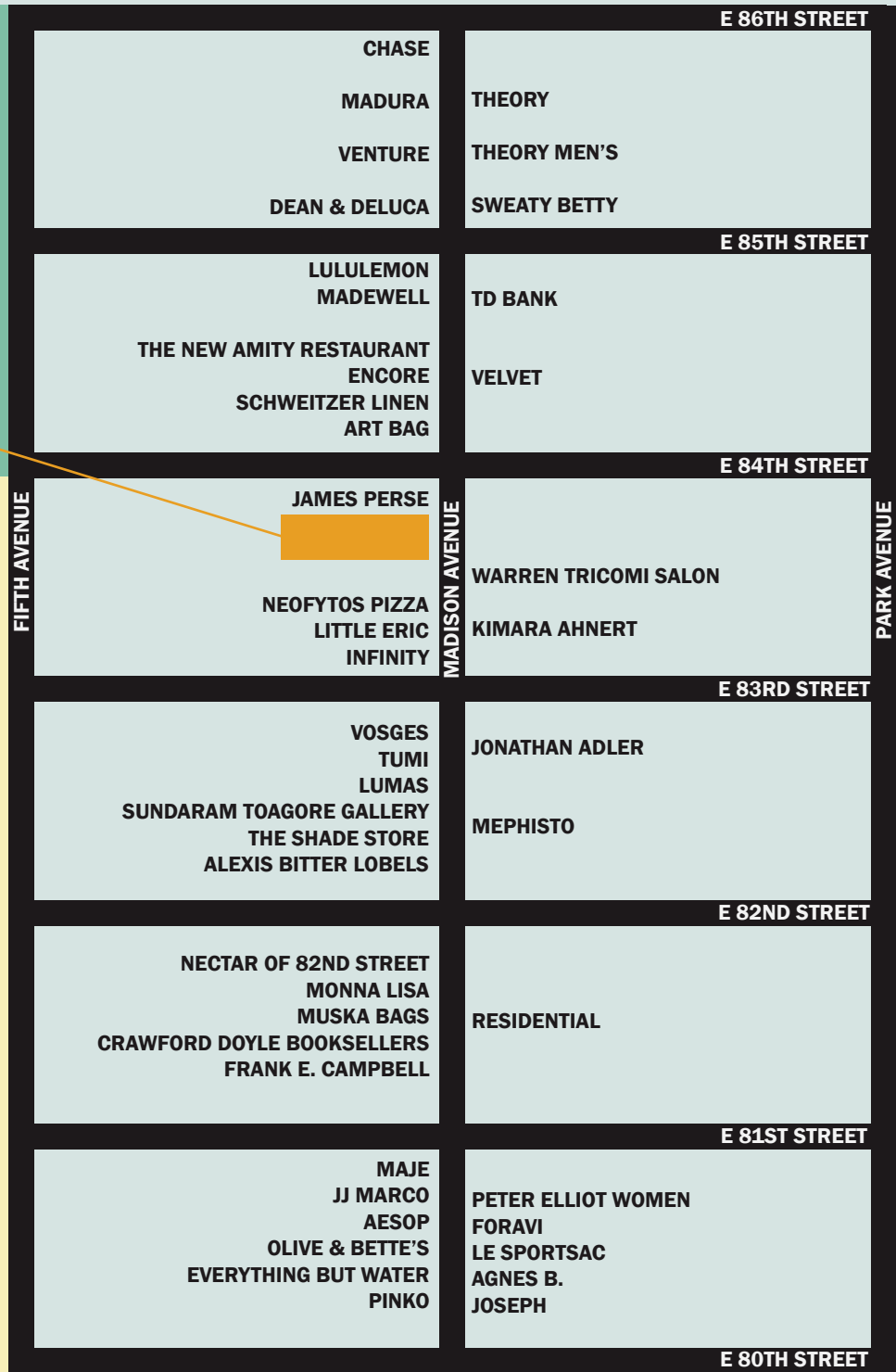
## SECOND FLOOR



CENTRAL PARK

**1122  
MADISON  
AVENUE**

METROPOLITAN  
MUSEUM OF ART



**MATTHEW SEIGEL**

Executive Vice President

917.522.8605

mseigel@thorretailadvisors.com

**SKYE TAYLOR**

Director

917.522.8603

staylor@thorretailadvisors.com



**THOR RETAIL  
ADVISORS**

Proposed Division

1122

MADISON AVENUE  
BETWEEN 83RD & 84TH STREETS

Second Floor

1,125 SF

1,125 SF



1,125 SF

1,125 SF

Ground Floor



